



SAFETY, HEALTH AND ENVIRONMENTAL INFORMATION
 IN ADDITION TO THE HAZARDS NORMALLY ASSOCIATED WITH THE TYPES OF WORK DETAILED ON THIS DRAWING, NOTE THE FOLLOWING SIGNIFICANT RESIDUAL RISKS:

FOR INFORMATION RELATING TO USE, CLEANING AND MAINTENANCE SEE THE HSE FILE DISMANTLING / DEMOLITION (FUTURE)

IT IS ASSUMED THAT ALL WORKS WILL BE CARRIED OUT BY A COMPETENT CONTRACTOR WORKING UNDER PERMITS TO DISMANTLE/DEMOLISH

GENERAL NOTE
 REFER ARCHITECTS INFORMATION FOR ALL LEGISLATIVE, SPATIAL, DIMENSIONAL, AND MATERIAL DESIGN ELEMENTS. THE DRAWING MUST BE READ IN CONJUNCTION WITH SUPPLEMENTARY STRUCTURAL, CIVIL, MECHANICAL, AND ELECTRICAL INFORMATION.
 FOR DESIGN INFORMATION RELATIVE TO LOADINGS (WIND LOADS, APPLIED LOADS, DEAD LOADS, IMPACT LOADS) REFER SUPPLEMENTARY ENGINEERING INFORMATION IN CONJUNCTION WITH ENGINEERS PROPOSED METHOD OF FIXING.
 FOR DESIGN INFORMATION RELATIVE TO STRUCTURAL DEPTHS, GAUGES ETC REFER ENGINEERS DRAWINGS.
 FOR DESIGN INFORMATION RELATIVE TO FIXINGS OR CONNECTING BETWEEN DESIGN ELEMENTS (BOLTED, SCREWED, WELDED OR CHEMICALLY BONDED) REFER SUPPLEMENTARY ENGINEERING INFORMATION.
 THIS DRAWING HAS BEEN ISSUED IN DRAFT FORM FOR COMMENT AND COST DEVELOPMENT PURPOSES.
 DO NOT SCALE FROM THIS DRAWING.
 ALL DIMENSIONS ARE IN METRIC UNLESS STATED OTHERWISE.
 DO NOT BUILD FROM THIS DRAWING.

IN ADDITION TO THE HAZARDS NORMALLY ASSOCIATED WITH THE TYPES OF WORK DETAILED ON THIS DRAWING, NOTE THE FOLLOWING SIGNIFICANT RESIDUAL RISKS:

ITEM	HAZARD	RISK

General revision to landscaping, waste compound added	OD	SEP/13	JD	SD
A PLANNING	OD	APR/13	JD	RMG

REV: DESCRIPTION BY: DATE: CHECKED: AUTH:

ATKINS
 Atkins Limited
 200 Brookside
 Street
 21-48/1
 Bedford
 Telephone: +44(0)1454 220 200
 Fax: +44(0)1454 220 201

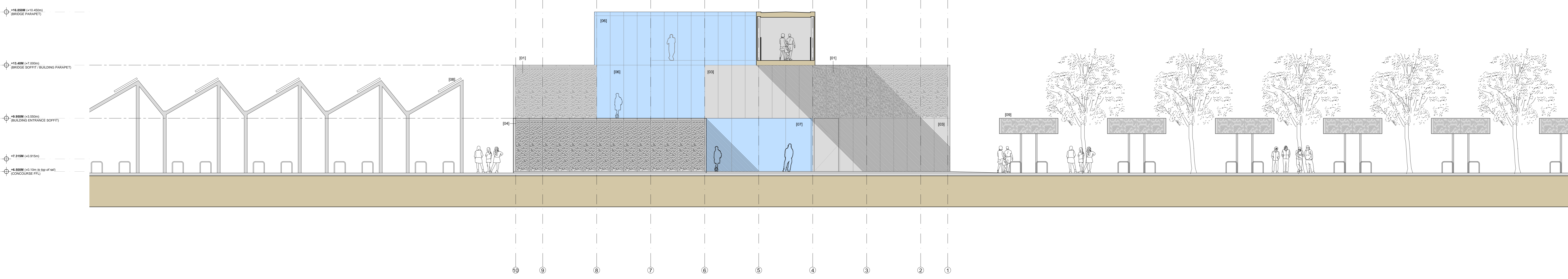
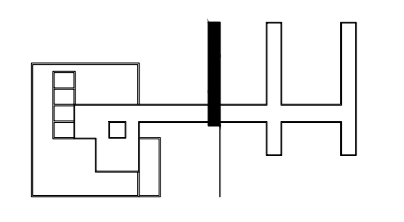
CLIENT: **Cambridgeshire County Council**

PROJECT: **CAMBRIDGE SCIENCE PARK STATION INTERCHANGE**

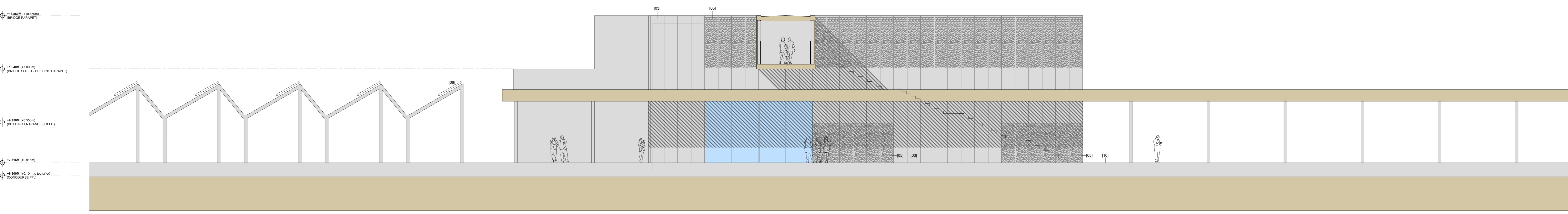
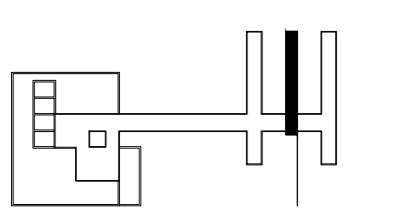
TITLE: **PROPOSED SITE PLAN**

SCALE:	ORIGINAL:	DESIGNED:	DRAWN:	CHECKED:	AUTHORISED:
AD:	ATKINS:	GD:	JD:	SD:	
1:500	GLA	16/11/12	16/11/12	16/11/12	16/11/12
PROJECT NO:	DISCIPLINE:	TITLE:	CODE:	ISSUE:	REV:
5110967	A	L	00	P04	B

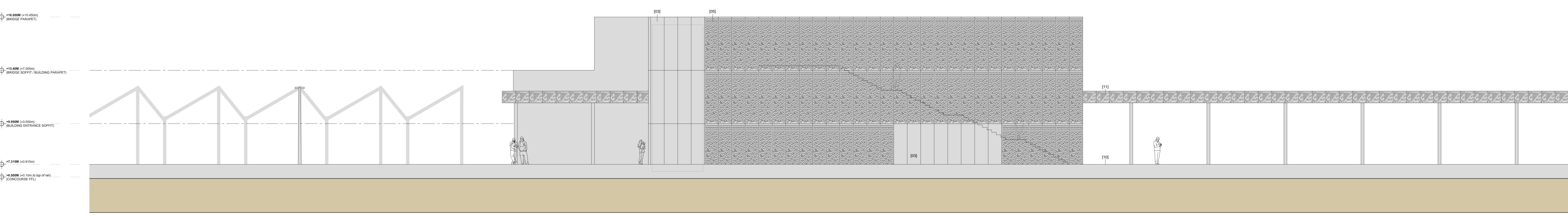
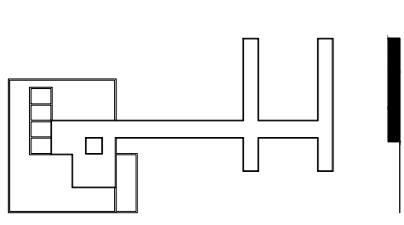
East



East



East



ATKINS

MATERIAL KEY

- [1] Metal cassette rainscreen system with bespoke laser cut pattern (50mm aperture) on proprietary cladding rails back to sheathing board on SFS construction taken back to primary steel frame
- [01a] Metal cassette rainscreen system with bespoke laser cut pattern (100mm aperture) on proprietary cladding rails back to sheathing board on SFS construction taken back to primary steel frame
- [2] Metal cassette rainscreen system with bespoke laser cut pattern back to Mullions and Transoms of window system. Aluminium framed, opening light window units
- [03] Metal cassette rainscreen system on proprietary cladding rails back to blockwork substrate between primary steel frame
- [04] Metal cassette rainscreen system with bespoke laser cut pattern on proprietary cladding rails back to steel sub frame
- [05] Metal cassette rainscreen system with bespoke laser cut pattern on proprietary cladding rails back to primary steel bridge structure
- [06] Aluminium framed, fixed light and opening light unitised curtain walling
- [07] Toughened shopfront glass system with sliding operation doors on sensors. Low threshold to provide DDA compliant level access.
- [08] Steel framed cycle parking canopies with photovoltaic cells
- [09] Steel framed cycle parking canopies with metal cassette rainscreen system with bespoke laser cut pattern
- [10] Precast concrete platform with tarmac finish
- [11] Metal cassette rainscreen system with bespoke laser cut pattern to platform lighting
- [12] Stainless steel columns for cantenary lighting

SAFETY, HEALTH AND ENVIRONMENTAL INFORMATION

IN ADDITION TO THE HAZARDS NORMALLY ASSOCIATED WITH THE TYPES OF WORK DETAILED ON THIS DRAWING, NOTE THE FOLLOWING RISKS AND INFORMATION:

CONSTRUCTION

FOR INFORMATION RELATING TO USE CLEANING AND MAINTENANCE SEE THE FILE DISMANTLING / DEMOLITION (FUTURE)

IT IS ASSUMED THAT ALL WORKS WILL BE CARRIED OUT BY A COMPETENT CONTRACTOR WORKING UNDER APPROPRIATE TO AN APPROVED THIS DESIGN

GENERAL NOTE

REFER ARCHITECTS INFORMATION FOR ALL LEGISLATIVE, SPATIAL, DIMENSIONAL, AND MATERIAL DESIGN ELEMENTS. SUPPLEMENTARY STRUCTURAL, CIVIL, MECHANICAL, AND ELECTRICAL INFORMATION.

FOR DESIGN INFORMATION RELATIVE TO LOADINGS (WIND LOADS, APPLIED LOADS, DEAD LOADS, IMPACT LOADS) REFER SUPPLEMENTARY ENGINEERING INFORMATION IN CONJUNCTION WITH ENGINEERS PROPOSED METHOD OF FIXING.

FOR DESIGN INFORMATION RELATIVE TO STRUCTURAL DEPTHS, GAUGES ETC REFER ENGINEERS DRAWINGS.

FOR DESIGN INFORMATION RELATIVE TO FIXINGS OR CONNECTORS BETWEEN DESIGN ELEMENTS (BOLTED, SCREWED, WELDED OR CHEMICALLY BONDED) REFER SUPPLEMENTARY ENGINEERING INFORMATION.

THIS DRAWING HAS BEEN ISSUED IN DRAFT FORM FOR COMMENT AND COST DEVELOPMENT PURPOSES.

DO NOT SCALE FROM THIS DRAWING.

ALL MEASUREMENTS ARE IN METRIC UNLESS STATED OTHERWISE.

DO NOT BUILD FROM THIS DRAWING.

IN ADDITION TO THE HAZARDS NORMALLY ASSOCIATED WITH THE TYPES OF WORK DETAILED ON THIS DRAWING, NOTE THE FOLLOWING SIGNIFICANT RESIDUAL RISKS:

ITEM	HAZARD	RISK

REV	DESCRIPTION	BY	DATE	CHECKED	AUTH.
A	PLANNING	OD	APR/13	JD	RMG

ATKINS
 200 Brookman Street
 Exeter EX1 1AA
 Telephone +44(0)1453 220 200
 Fax +44(0)1453 220 201

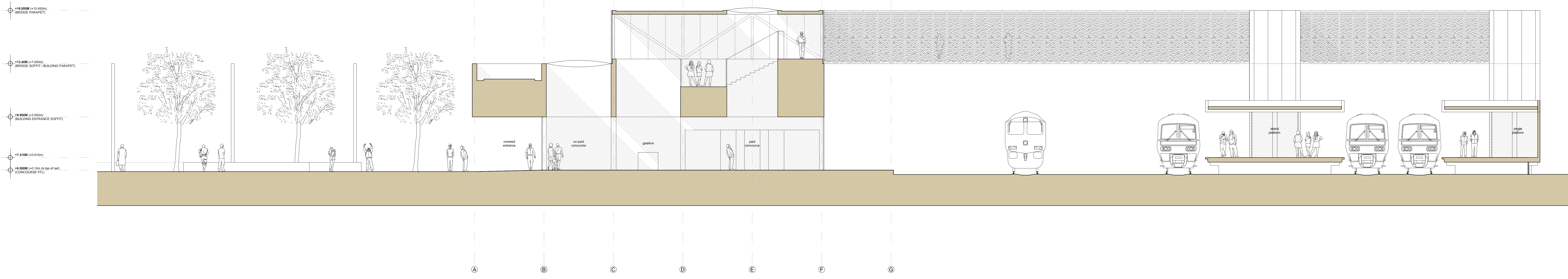
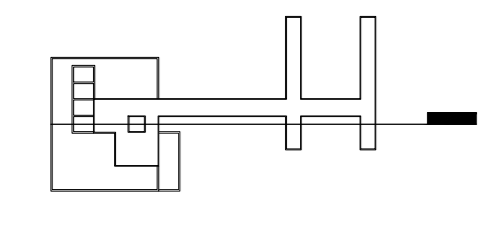
CLIENT: **Cambridgeshire County Council**

PROJECT: **CAMBRIDGE SCIENCE PARK STATION INTERCHANGE**

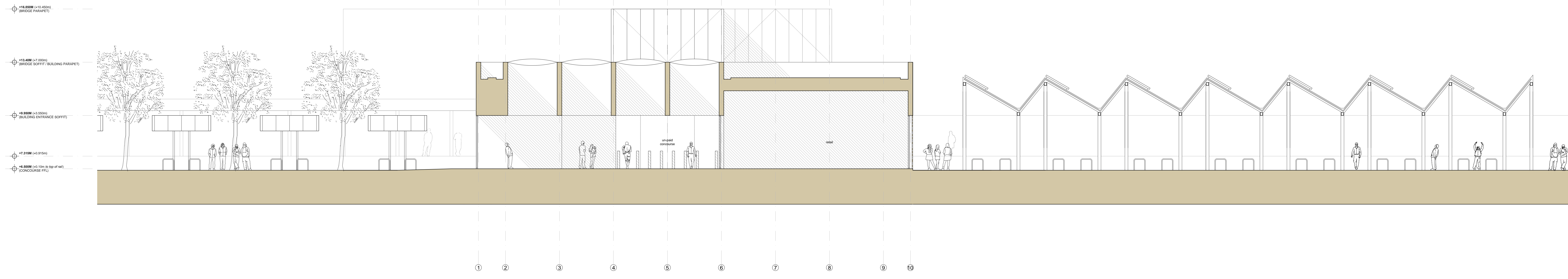
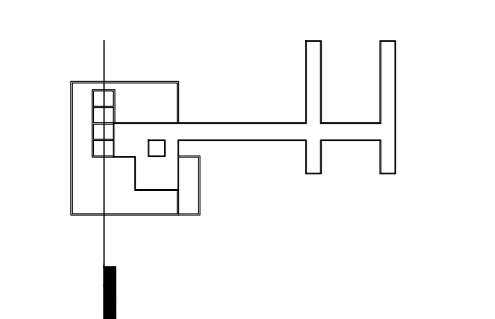
TITLE: **PROPOSED ELEVATIONS EAST**

SCALE:	ORIGINAL SIZE	DESIGNED	DRAWN	CHECKED	AUTHORISED
1:100	AO	GD	GD	JD	SD
OFFICE:	DATE:	DATE:	DATE:	DATE:	DATE:
GLA	16/11/12	16/11/12	16/11/12	16/11/12	16/11/12
PROJECT NO:	DRAWING NO:	CODE:	SCALE:	REV:	
5110967	/A	/E	/00	/P03	/A

A - A



B - B



SAFETY, HEALTH AND ENVIRONMENTAL INFORMATION
 PLACEMENT TO THE HAZARDS NORMALLY ASSOCIATED WITH THE TYPES OF WORK DETAIL ON THIS DRAWING. NOTE THE FOLLOWING RISKS AND INFORMATION:

FOR INFORMATION RELATING TO USE CLEANING AND MAINTENANCE SEE THE HSE FILE
DISMANTLING / DEMOLITION (FUTURE)

IT IS ASSUMED THAT ALL WORKS WILL BE CARRIED OUT BY A COMPETENT CONTRACTOR WORKING UNDER APPROPRIATE TO AN APPROVED THIS DRAWING

GENERAL NOTE
 REFER ARCHITECTS INFORMATION FOR ALL LEGISLATIVE, SPATIAL, DIMENSIONAL, AND MATERIAL DESIGN ELEMENTS. THE DRAWING MUST BE READ IN CONJUNCTION WITH SUPPLEMENTARY STRUCTURAL, CIVIL, MECHANICAL, AND ELECTRICAL INFORMATION.
 FOR DESIGN INFORMATION RELATIVE TO LOADINGS (WIND LOADS, APPLIED LOADS, DEAD LOADS, IMPACT LOADS) REFER SUPPLEMENTARY ENGINEERING INFORMATION IN CONJUNCTION WITH ENGINEERS PROPOSED METHOD OF FIXING.
 FOR DESIGN INFORMATION RELATIVE TO STRUCTURAL DEPTHS, GAUGES ETC REFER ENGINEERS DRAWINGS.
 FOR DESIGN INFORMATION RELATIVE TO FIXINGS OR CONNECTIONS BETWEEN DESIGN ELEMENTS (BOLTED, SCREWED, WELDED OR CHEMICALLY BONDED) REFER SUPPLEMENTARY ENGINEERING INFORMATION.
 THIS DRAWING HAS BEEN ISSUED IN DRAFT FORM FOR COMMENT AND COST DEVELOPMENT PURPOSES.
 DO NOT SCALE FROM THIS DRAWING.
 ALL MEASUREMENTS ARE IN METRIC UNLESS STATED OTHERWISE.
 DO NOT BUILD FROM THIS DRAWING.

IN ADDITION TO THE HAZARDS NORMALLY ASSOCIATED WITH THE TYPES OF WORK DETAILED ON THIS DRAWING, NOTE THE FOLLOWING SIGNIFICANT RESIDUAL RISKS:

RISK	HAZARD	RISK

REV	DESCRIPTION	BY	DATE	CHECKED	AUTH.
B	Window to retail space and small cycle parking canopies amended.	JD	SEP/13	JD	RMG
A	PLANNING	JD	APR/13	JD	RMG

ATKINS
 Atkins Limited
 200 Brookside
 Derby
 DE1 4AG
 United Kingdom
 Telephone: +44(0)141 220 2000
 Fax: +44(0)141 220 2001

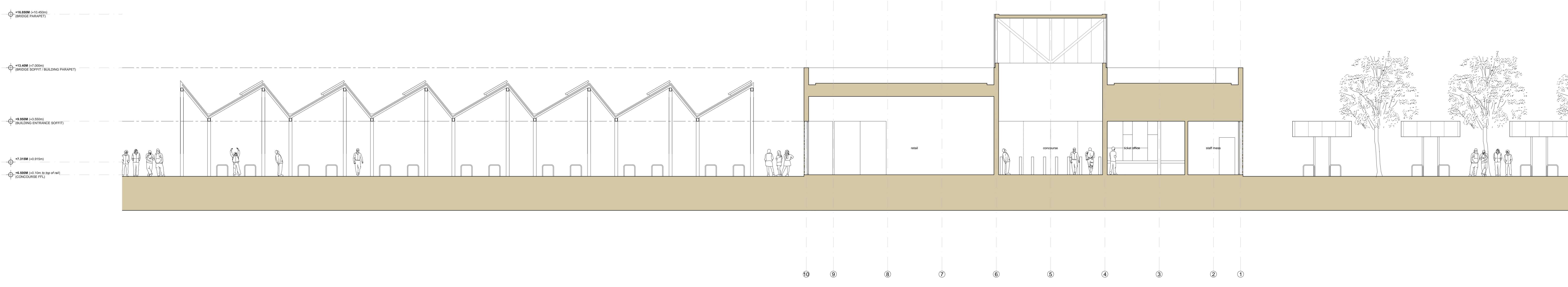
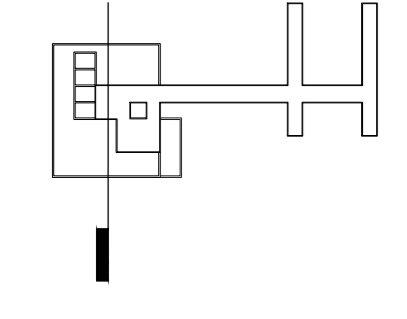
CLIENT: **Cambridgeshire County Council**

PROJECT: **CAMBRIDGE SCIENCE PARK STATION INTERCHANGE**

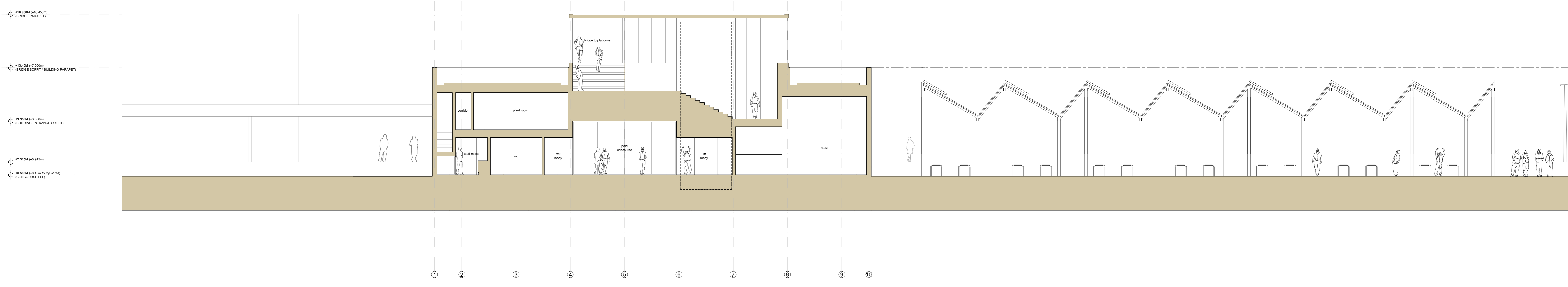
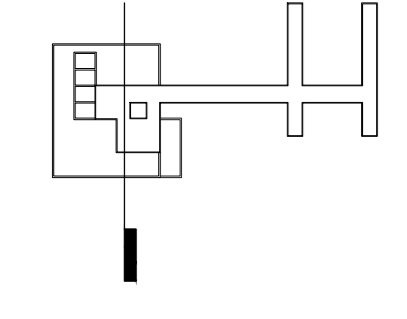
FILE: **PROPOSED SECTIONS SHEET 1**

SCALE:	ORIGINAL SIZE	DESIGNED	DRAWN	CHECKED	AUTHORISED
1:100	A0	ATKINS	GO	JD	SD
OFFICE:	GLA	DATE:	16/11/12	DATE:	16/11/12
PROJECT NO:	5110967	DISCIPLINE:	A	CODE:	S / 00 / P10 / B

C - C



D - D



SAFETY, HEALTH AND ENVIRONMENTAL INFORMATION
IN ADDITION TO THE HAZARDS NORMALLY ASSOCIATED WITH THE TYPES OF WORK DETAILLED ON THIS DRAWING, NOTE THE FOLLOWING SIGNIFICANT RESIDUAL RISKS:

FOR INFORMATION RELATING TO USE CLEANING AND MAINTENANCE SEE THE FILE FILE
DISMANTLING / DEMOLITION (FUTURE)

IF IT IS ASSUMED THAT ALL WORKS WILL BE CARRIED OUT BY A COMPETENT CONTRACTOR WORKING UNDER APPROPRIATE TO ALL APPLICABLE THIS DUTY/STANDARD

GENERAL NOTE
REFER ARCHITECTS INFORMATION FOR ALL LEGISLATIVE, SPATIAL, DIMENSIONAL AND MATERIAL DESIGN ELEMENTS. THE DRAWING MUST BE READ IN CONJUNCTION WITH SUPPLEMENTARY STRUCTURAL, CIVIL, MECHANICAL AND ELECTRICAL INFORMATION.
FOR DESIGN INFORMATION RELATIVE TO LOADINGS (WIND LOADS, APPLIED LOADS, DEAD LOADS, IMPACT LOADS) REFER SUPPLEMENTARY ENGINEERING INFORMATION IN CONJUNCTION WITH ENGINEERS PROPOSED METHOD OF FIXING.
FOR DESIGN INFORMATION RELATIVE TO STRUCTURAL DEPTHS, GAUGES ETC REFER ENGINEERS DRAWINGS.
FOR DESIGN INFORMATION RELATIVE TO FIXINGS OR CONNECTIONS BETWEEN DESIGN ELEMENTS: BOLTED, SCREWED, WELDED OR CHEMICALLY BONDED REFER SUPPLEMENTARY ENGINEERING INFORMATION.
THIS DRAWING HAS BEEN ISSUED IN DRAFT FORM FOR COMMENT AND COST DEVELOPMENT PURPOSES.
DO NOT SCALE FROM THIS DRAWING.
ALL MEASUREMENTS ARE IN METRIC UNLESS STATED OTHERWISE.
DO NOT BUILD FROM THIS DRAWING.

IN ADDITION TO THE HAZARDS NORMALLY ASSOCIATED WITH THE TYPES OF WORK DETAILLED ON THIS DRAWING, NOTE THE FOLLOWING SIGNIFICANT RESIDUAL RISKS:

ITEM	HAZARD	RISK

REV	DESCRIPTION	BY	DATE	CHECKED	AUTH
B	Window to staff / retail space and small cycle parking canopies amended.	QD	SEP/13	JD	RMG
A	PLANNING	QD	APR/13	JD	RMG

ATKINS
Atkins Limited
200 Brookside
Shepperton
Middlesex
Telephone: +44(0)181 220 2200
Fax: +44(0)181 220 2201

CLIENT: **Cambridgeshire County Council**

PROJECT: **CAMBRIDGE SCIENCE PARK STATION INTERCHANGE**

TITLE: **PROPOSED SECTIONS SHEET 2**

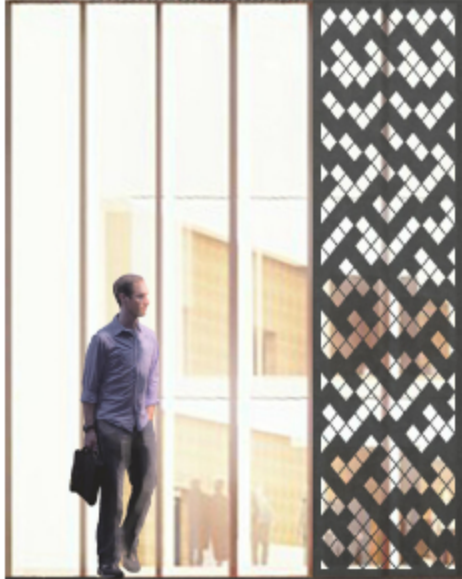
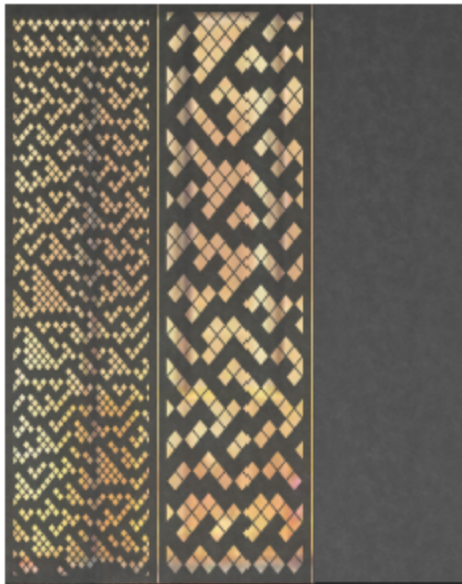
SCALE	ORIGINAL	DESIGNED	DRAWN	CHECKED	AUTHORISED
1:100	AD	ATKINS	GO	JD	SD
OFFICE	DATE	DATE	DATE	DATE	DATE
GLA	16/11/12	16/11/12	16/11/12	16/11/12	16/11/12



APPROACH FROM WEST LOOKING EAST



APPROACH FROM NORTH LOOKING SOUTH



PART ELEVATION